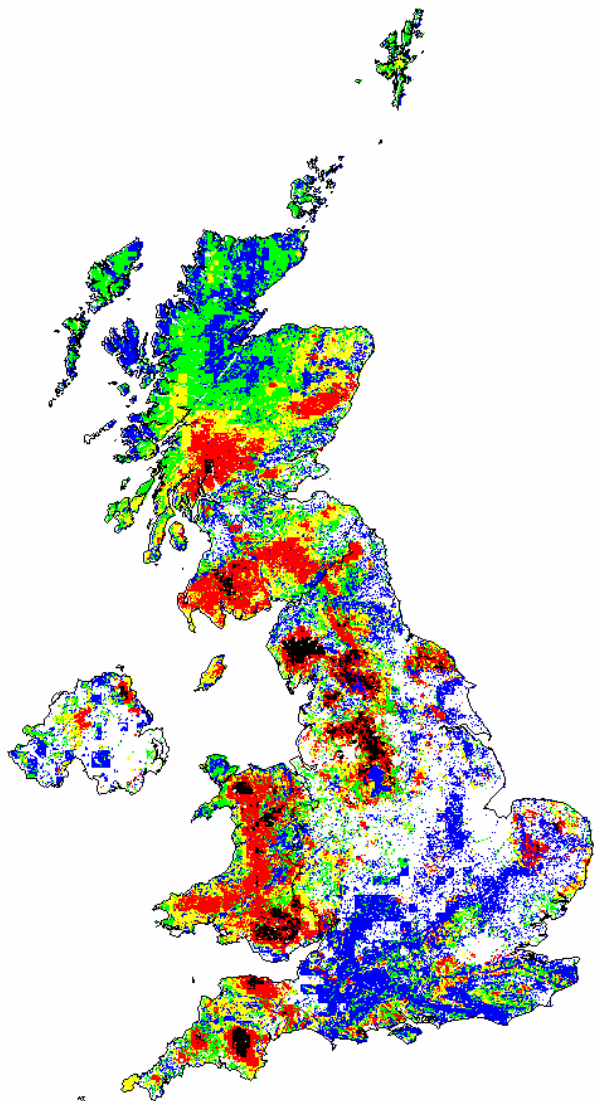


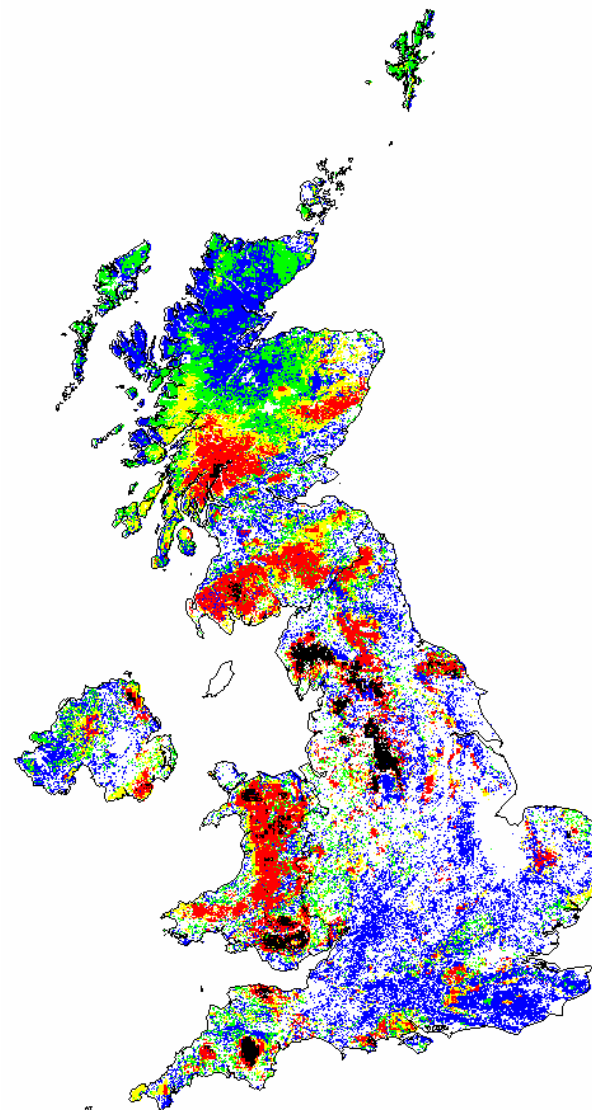
**Exceedance of 5<sup>th</sup>-percentile acidity critical loads**

Figure 1.1

Previous (February 2001)  
All ecosystems combined



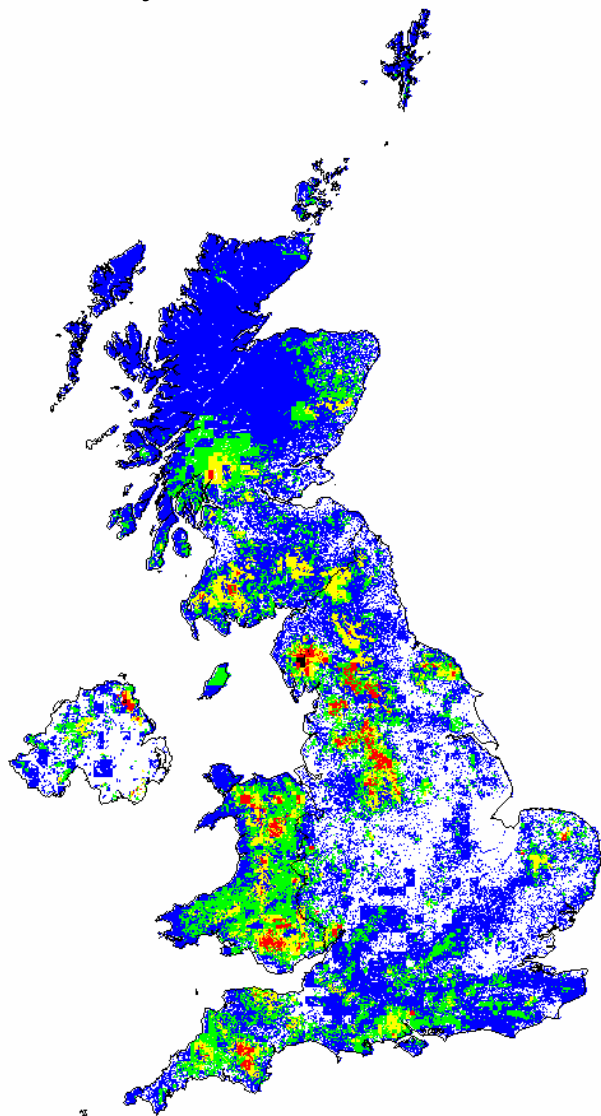
Update (February 2003)  
All habitats combined



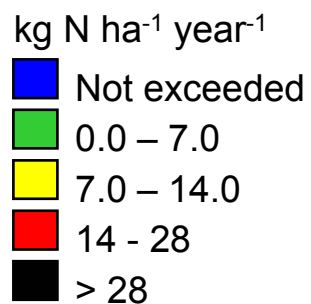
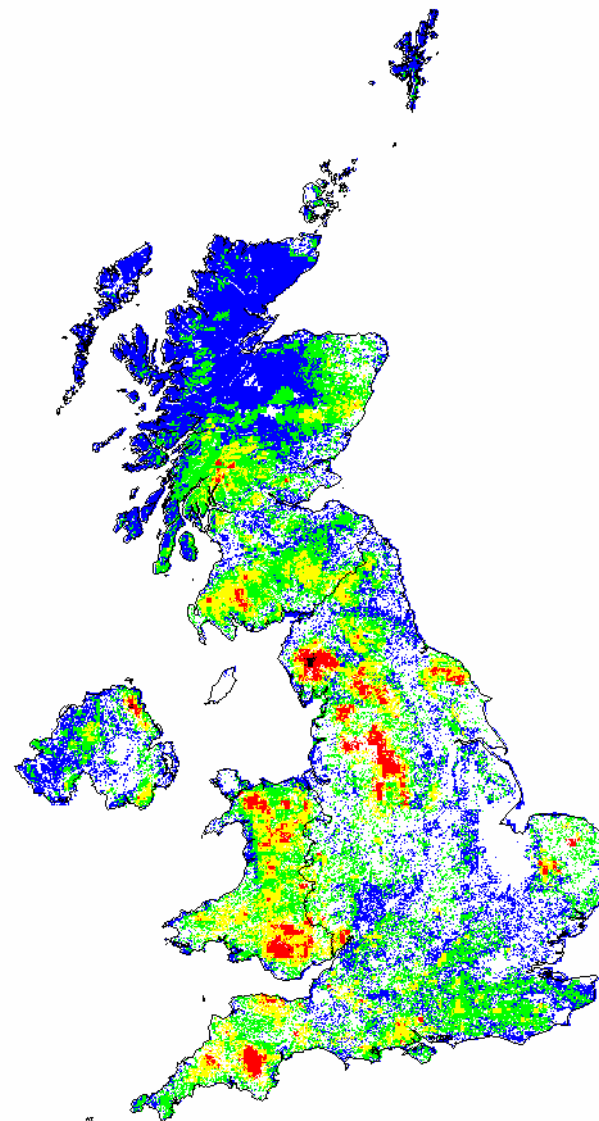
## Exceedance of 5<sup>th</sup>-percentile nutrient nitrogen critical loads

Figure 1.2

Previous (February 2001)  
All ecosystems combined



Update (February 2003)  
All habitats combined



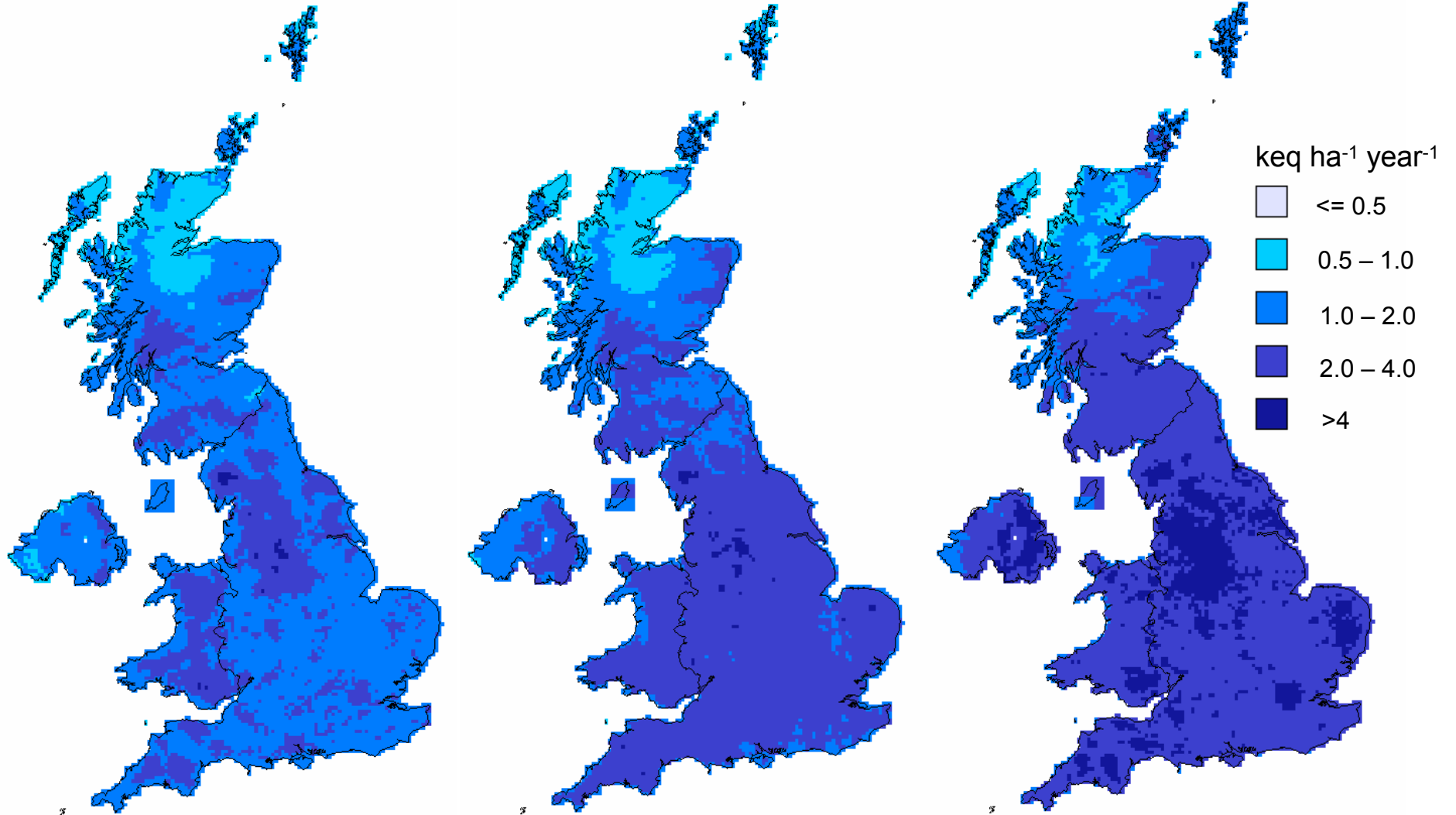
Total acid deposition (S + NO<sub>x</sub> + NH<sub>x</sub>) 1995-97

Figure 1.3

(a) Average (all vegetation)

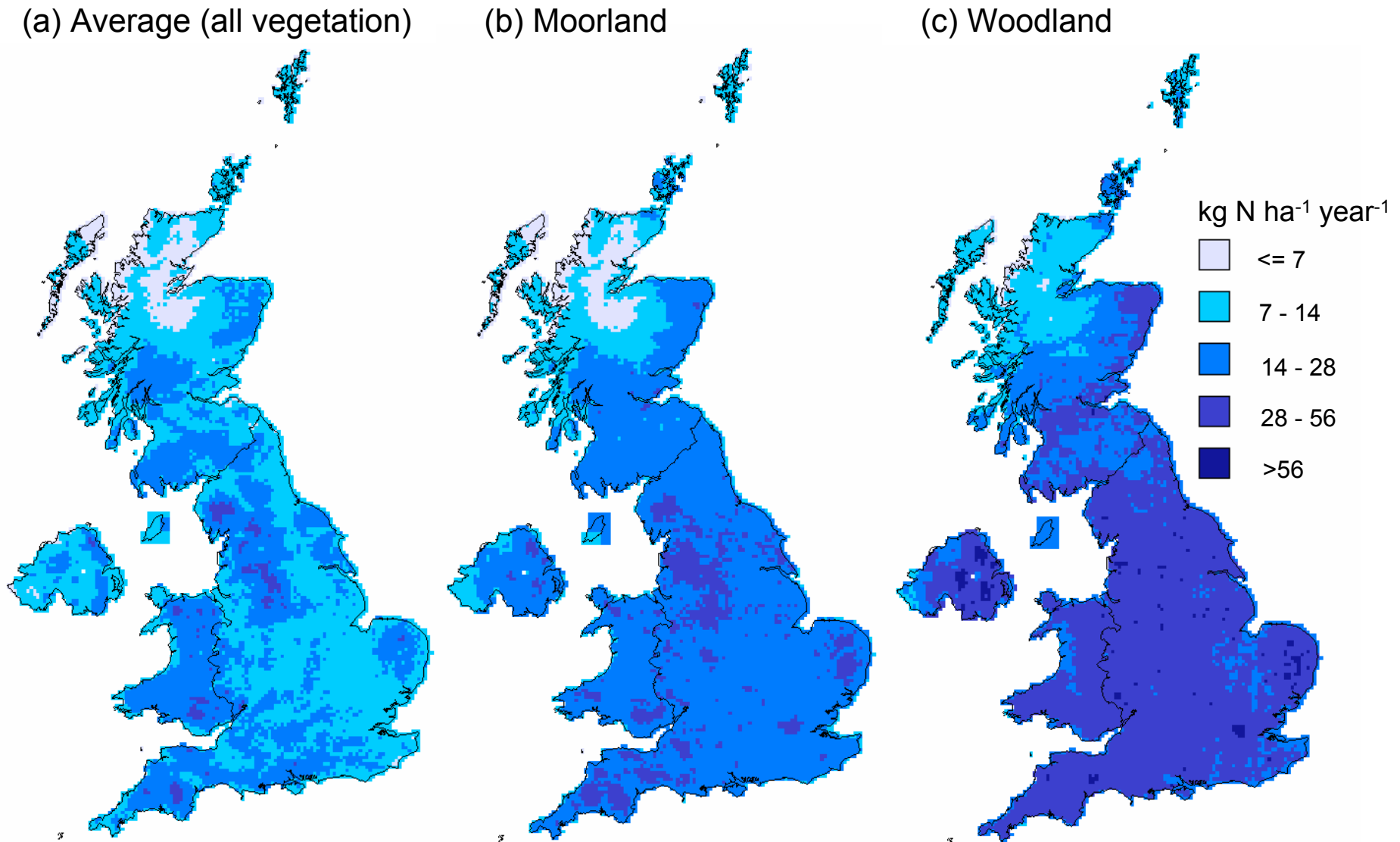
(b) Moorland

(c) Woodland



Total nitrogen deposition (NO<sub>x</sub> + NH<sub>x</sub>) 1995-97

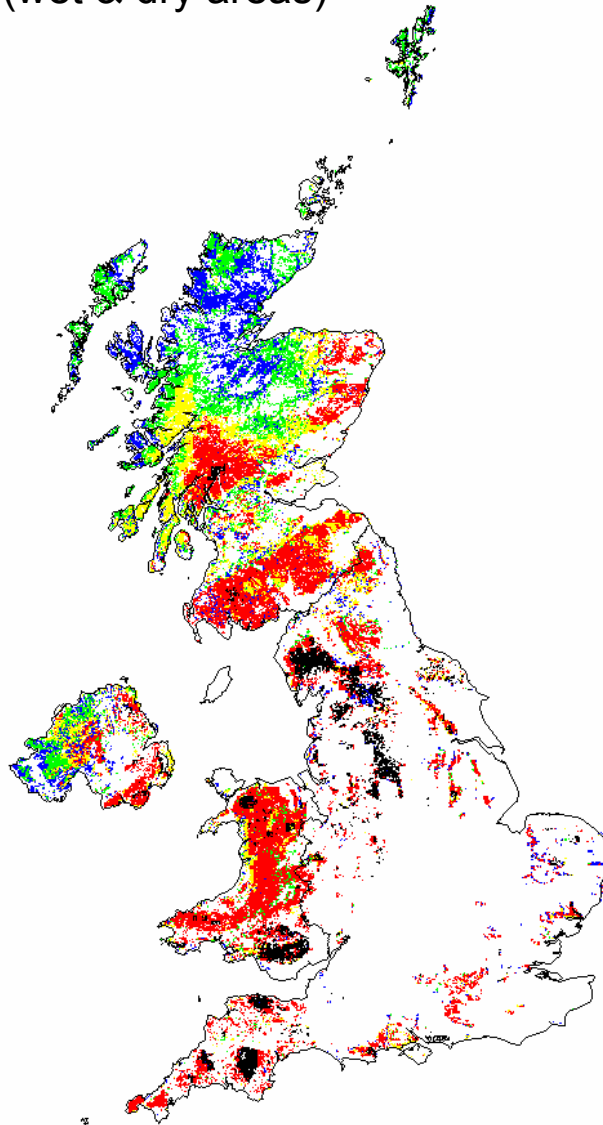
Figure 1.4



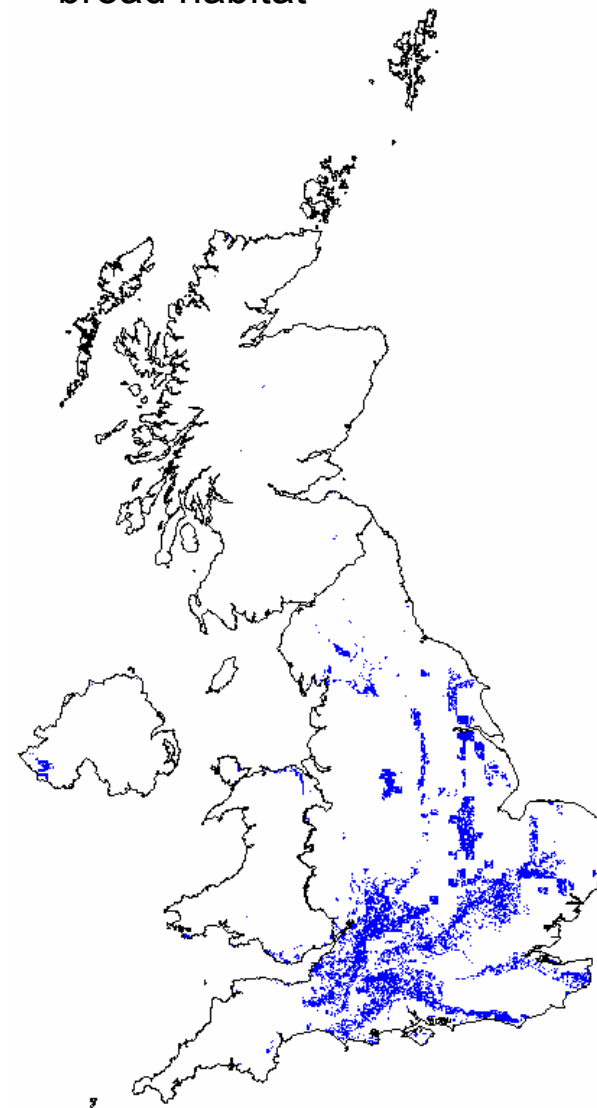
Acidity exceedance maps based on 1995-97 total acid deposition

Figure 1.5

Acid grassland broad habitat  
(wet & dry areas)



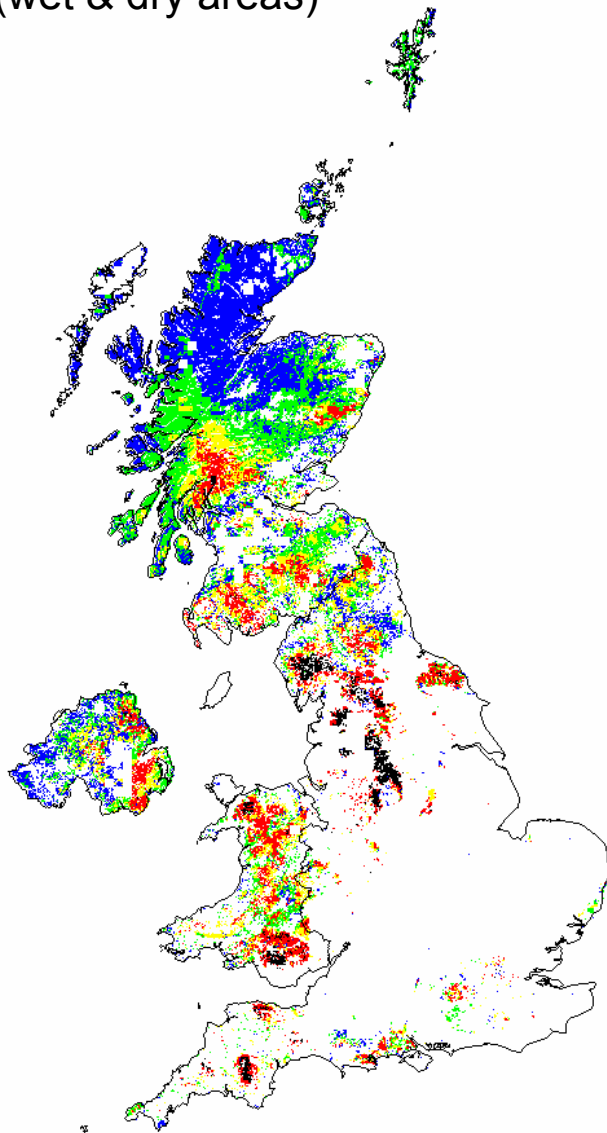
Calcareous grassland broad habitat



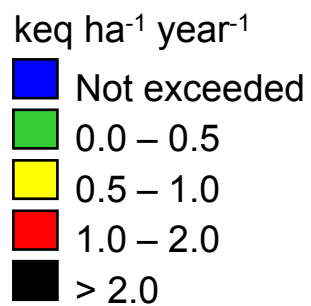
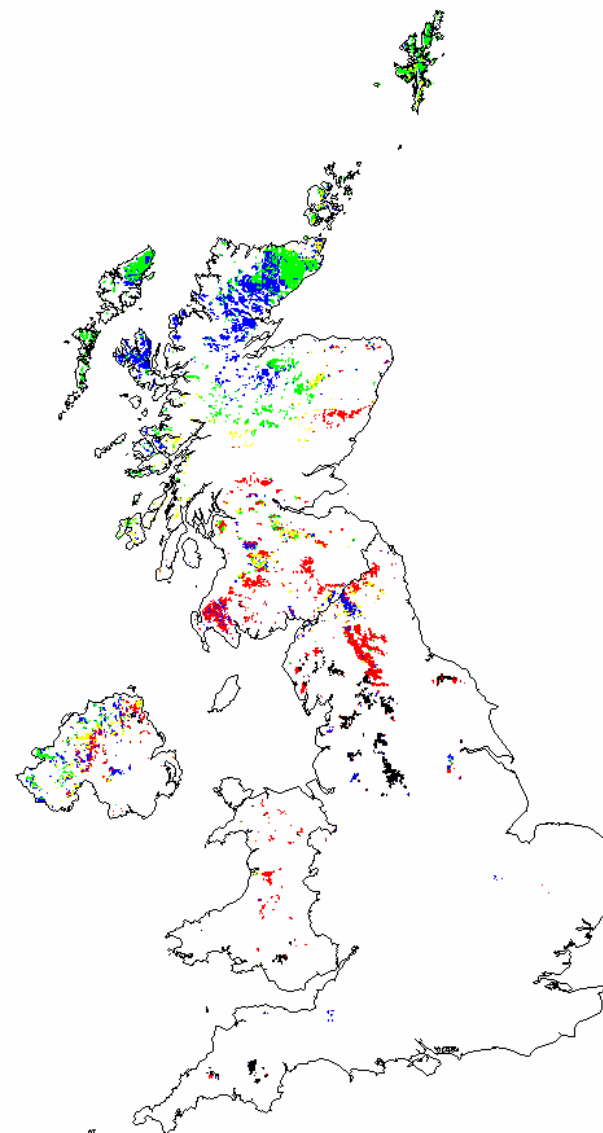
Acidity exceedance maps based on 1995-97 total acid deposition

Figure 1.6

Dwarf shrub heath broad habitat  
(wet & dry areas)



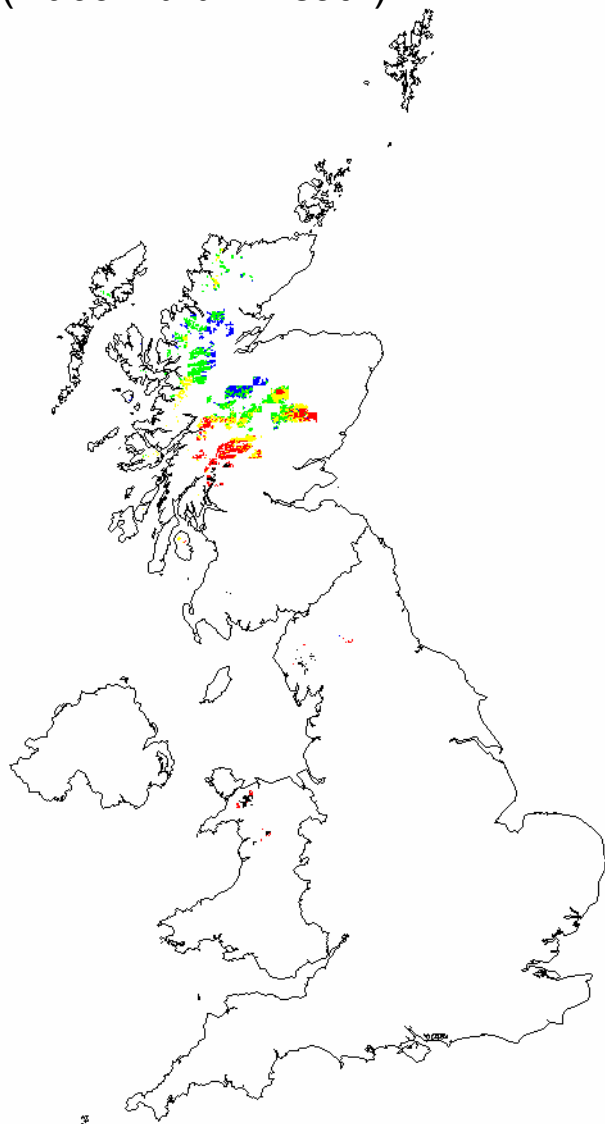
Bog broad habitat



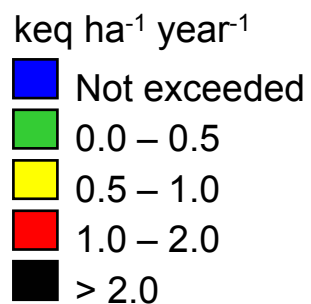
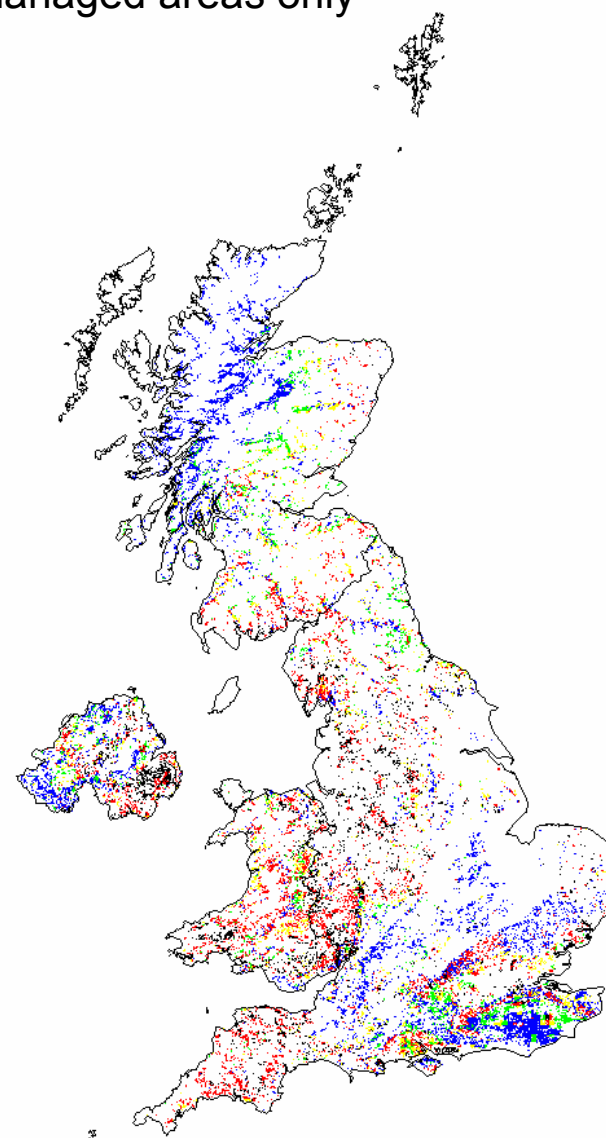
Acidity exceedance maps based on 1995-97 total acid deposition

Figure 1.7

Montane broad habitat  
(*Racomitrium* heath)



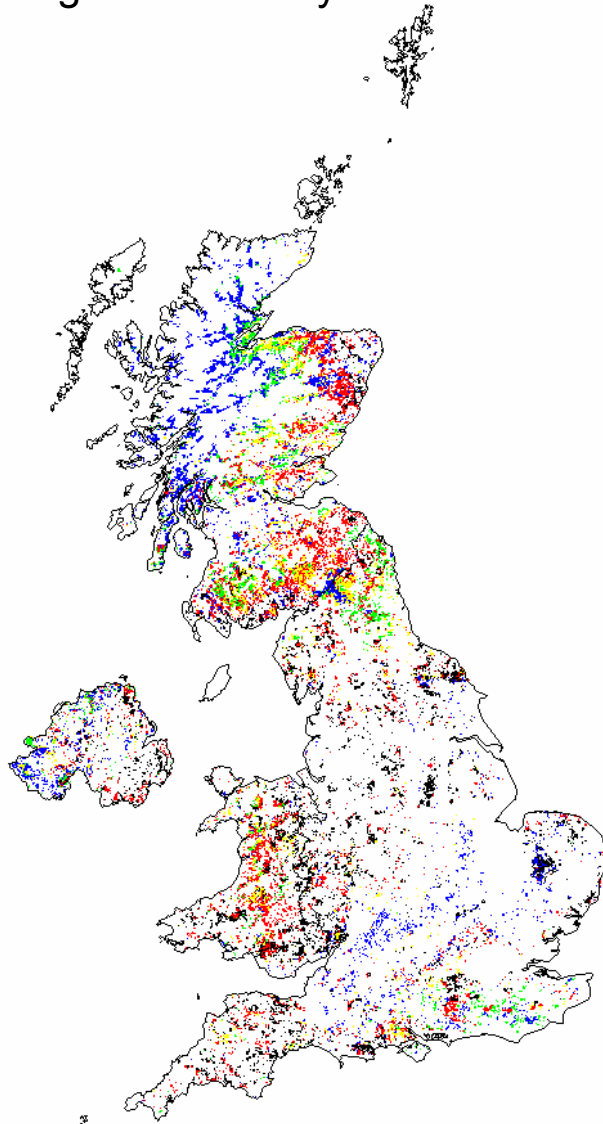
Broadleaved, mixed & yew woodland broad habitat: unmanaged areas only



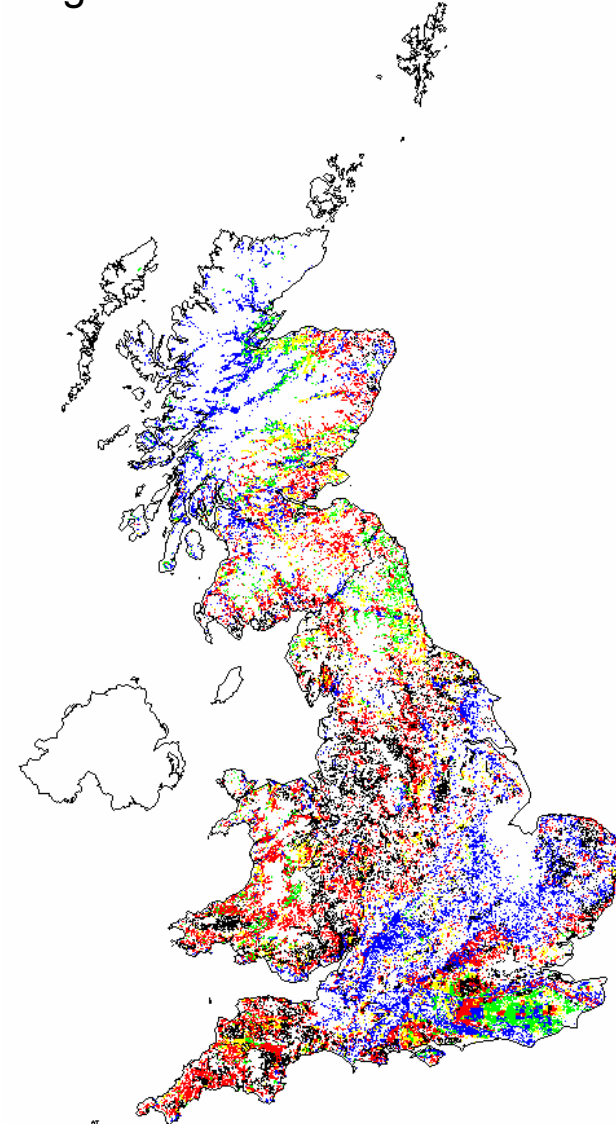
Acidity exceedance maps based on 1995-97 total acid deposition

Figure 1.8

Coniferous woodland broad habitat:  
managed areas only



Broadleaved, mixed & yew woodland broad  
habitat: managed broadleaved woodland

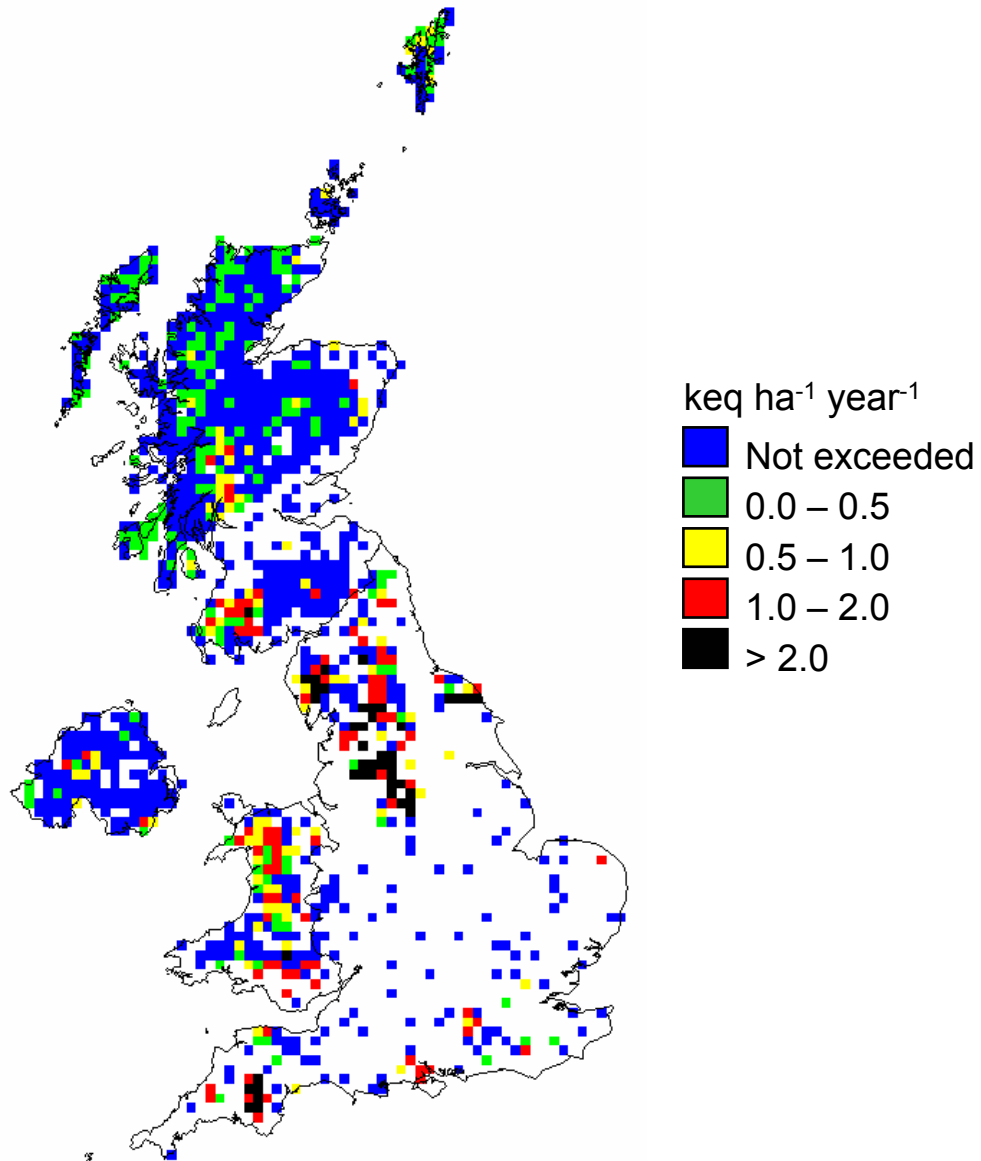




**Acidity exceedance map based on 1995-97 total acid deposition**

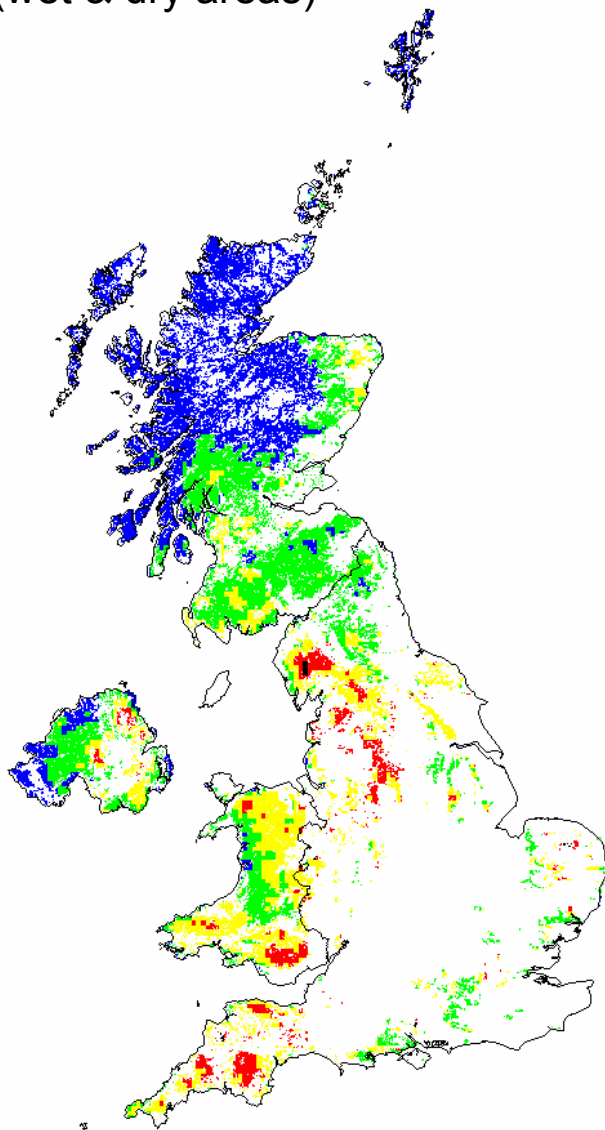
Figure 1.9

Freshwaters (standing waters & streams) – 1163 selected sites only

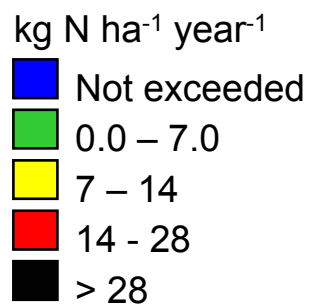
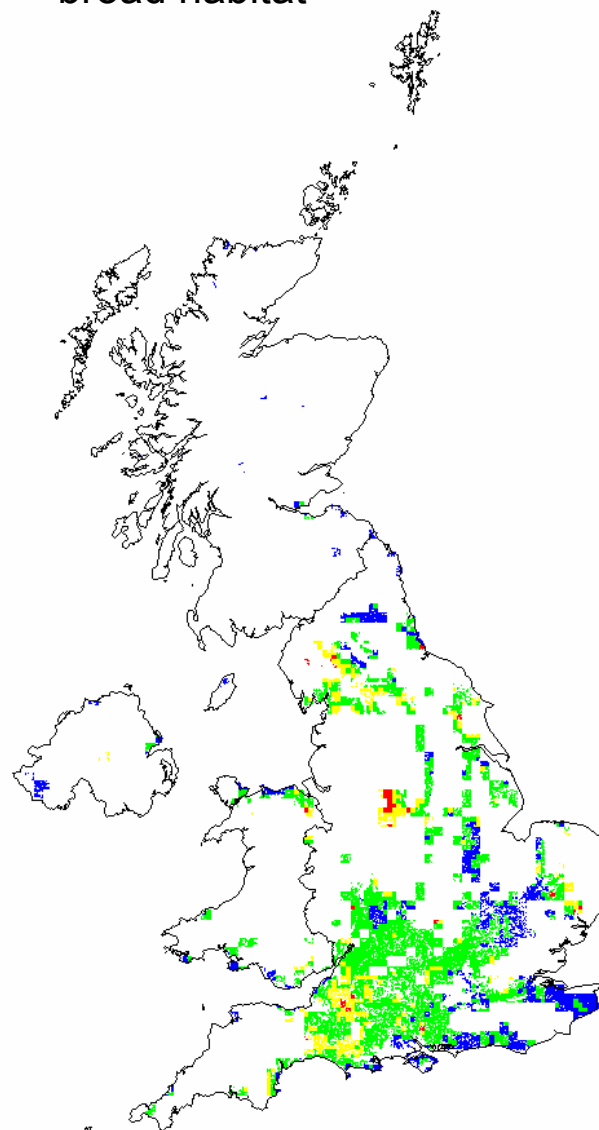


**Nutrient nitrogen exceedance maps based on 1995-97 total nitrogen deposition** Figure 1.10

Acid grassland broad habitat  
(wet & dry areas)

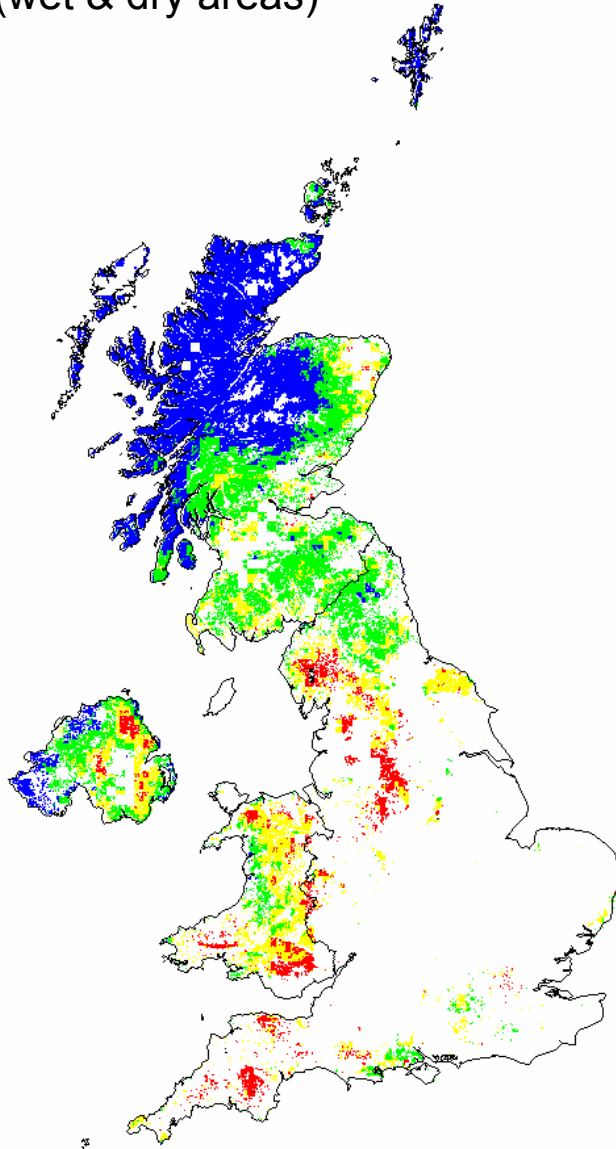


Calcareous grassland broad habitat

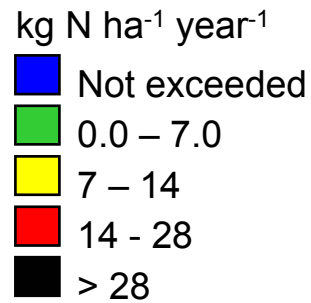
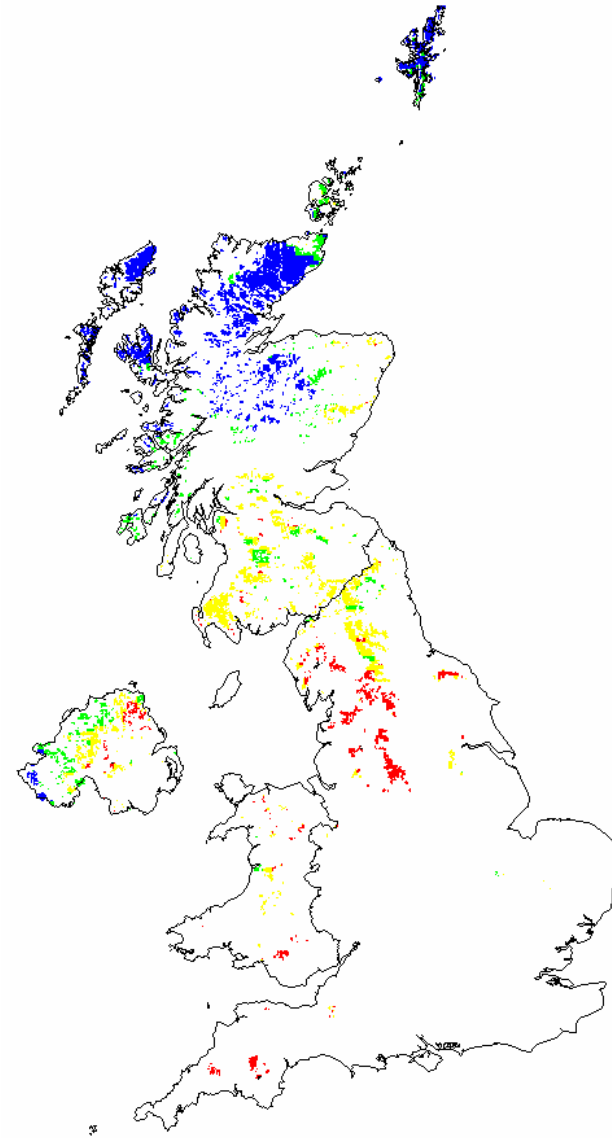


**Nutrient nitrogen exceedance maps based on 1995-97 total nitrogen deposition** Figure 1.11

Dwarf shrub heath broad habitat  
(wet & dry areas)



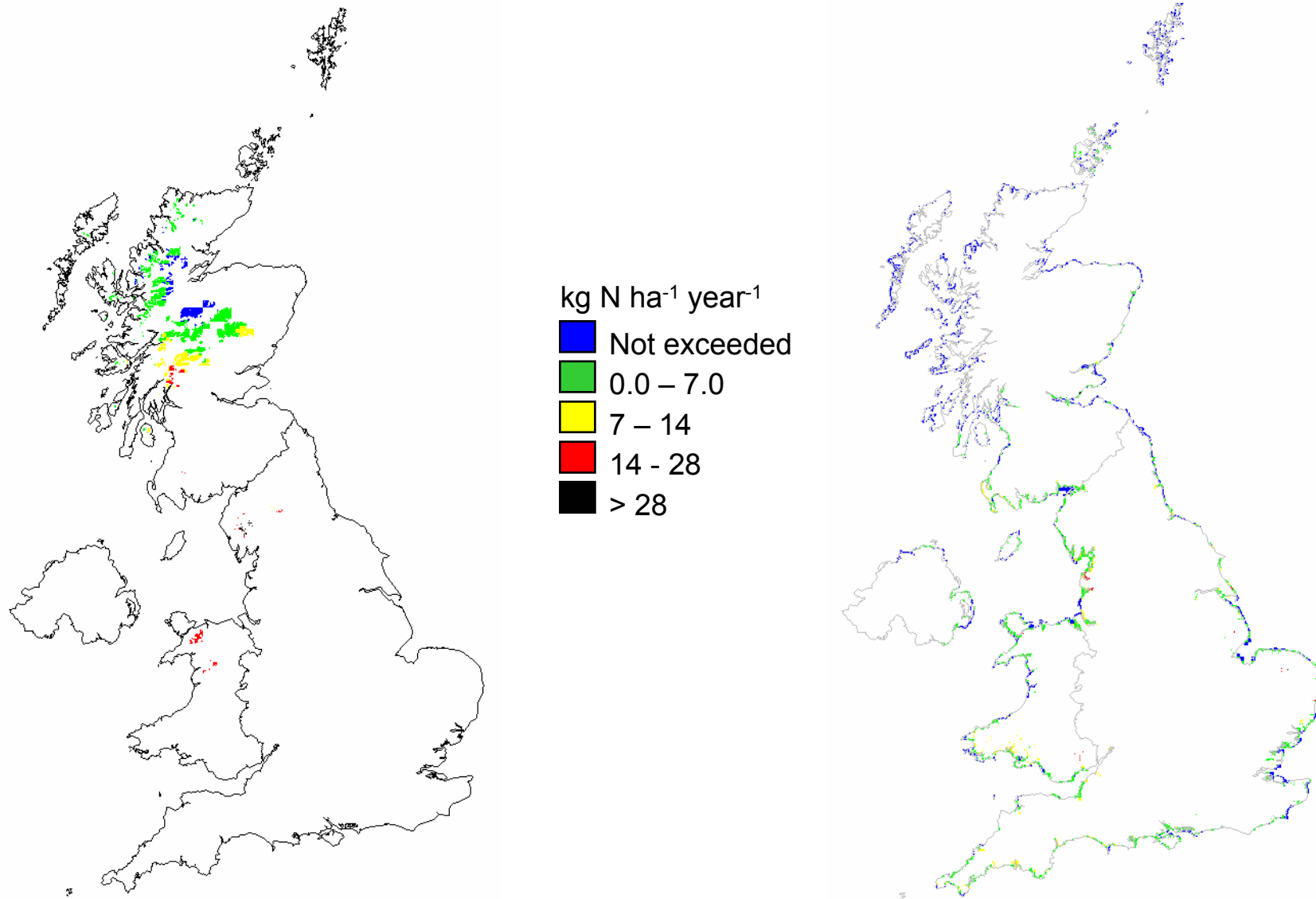
Bog broad habitat



**Nutrient nitrogen exceedance maps based on 1995-97 total nitrogen deposition** Figure 1.12

Montane broad habitat

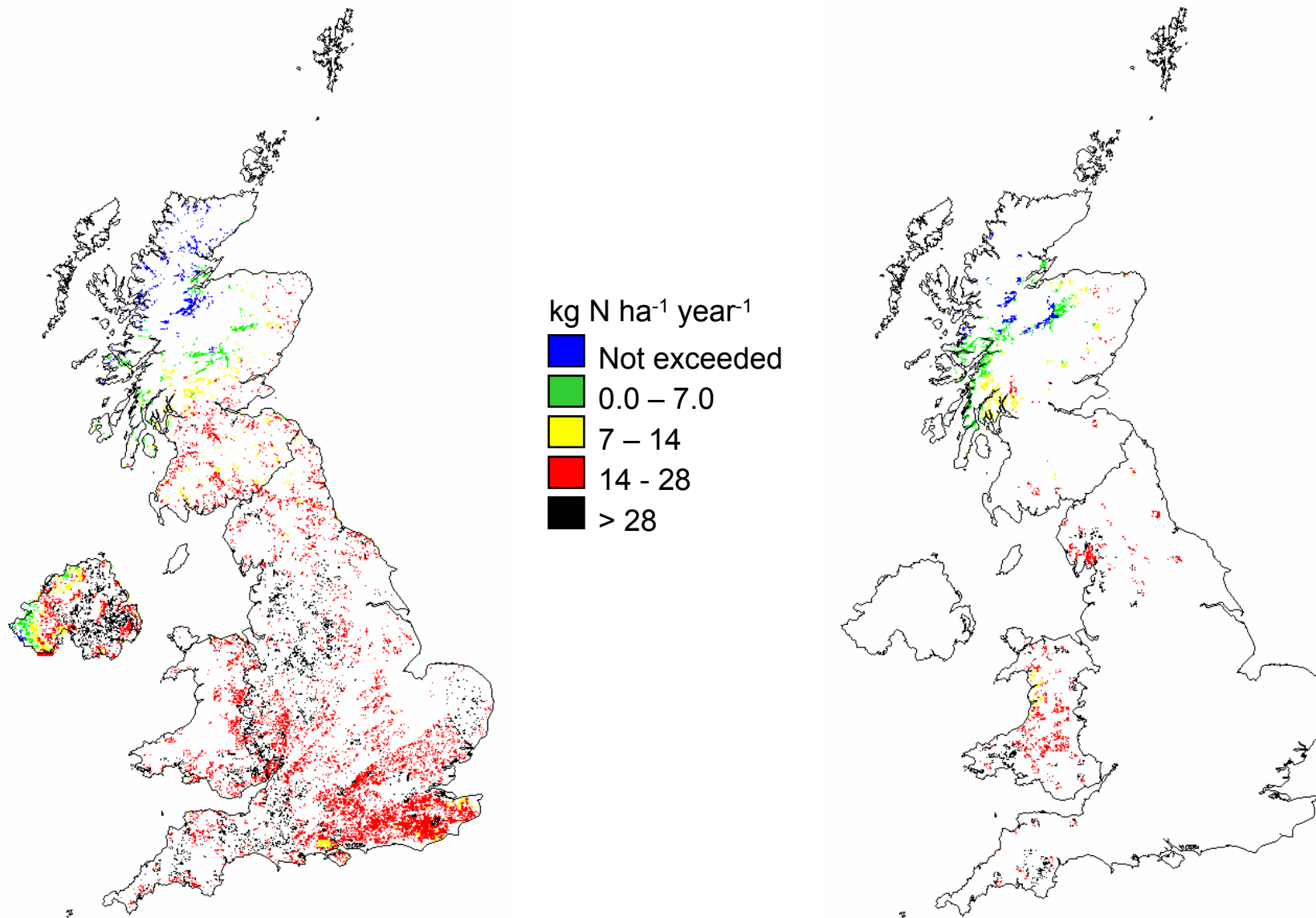
Supralittoral sediment broad habitat



**Nutrient nitrogen exceedance maps based on 1995-97 total nitrogen deposition** Figure 1.13

Broadleaved, mixed & yew woodland broad habitat:  
Unmanaged woodland (ground flora)

Atlantic oak woods (epiphytic lichens)



**Nutrient nitrogen exceedance maps based on 1995-97 total nitrogen deposition** Figure 1.14

Coniferous woodland broad habitat:  
managed areas only

Broadleaved, mixed & yew woodland broad  
habitat: managed broadleaved woodland

