

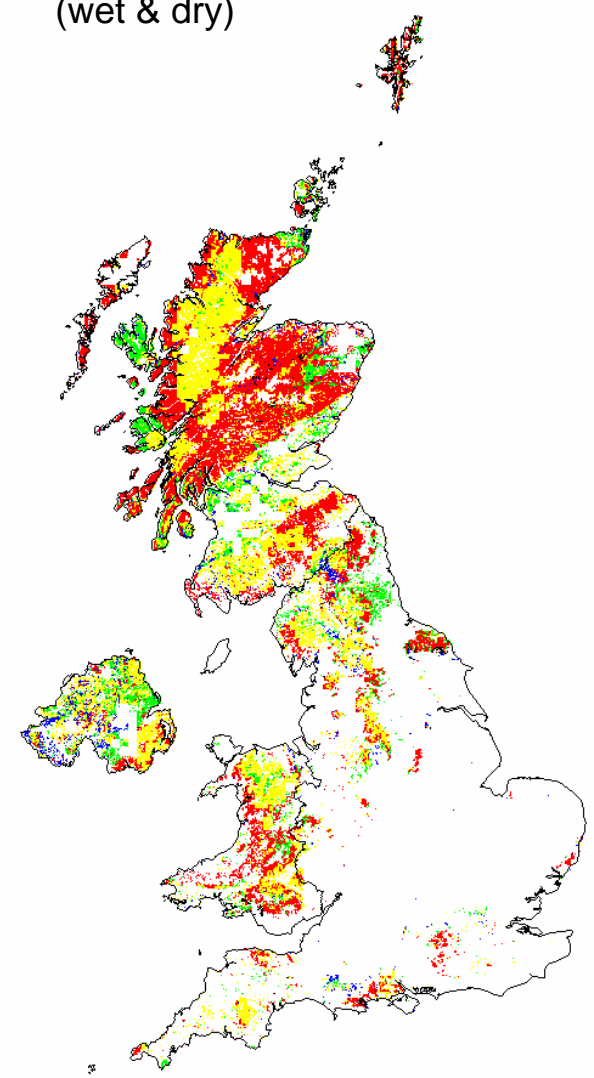
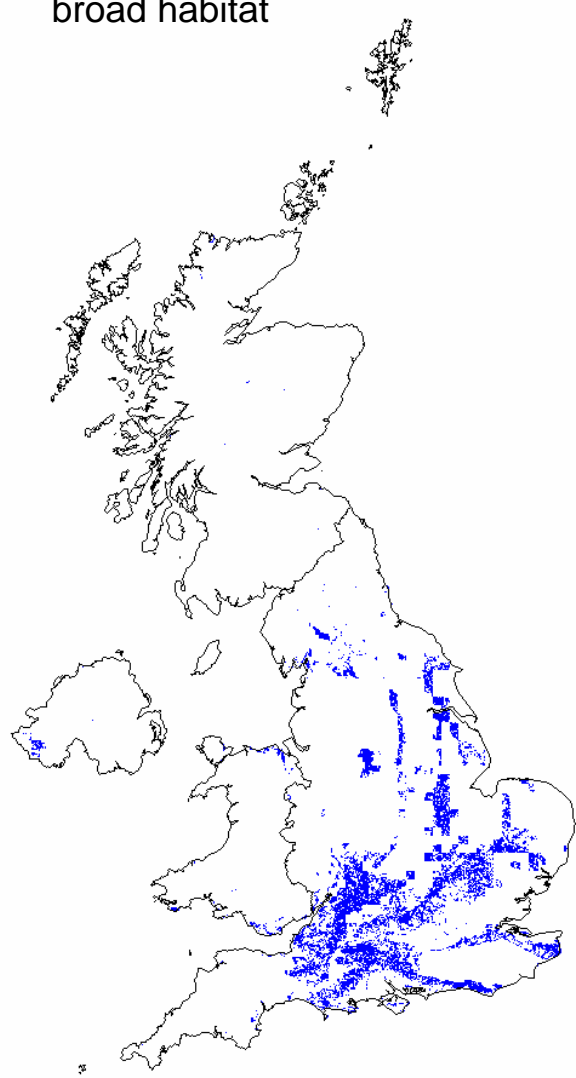
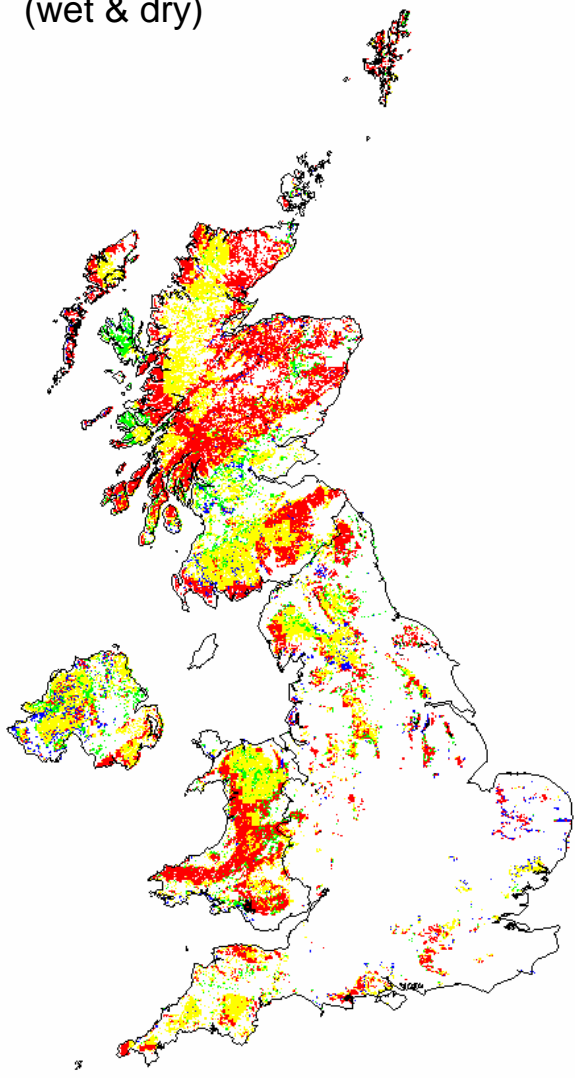
Maximum critical load of sulphur ($CL_{max}S$)

Figure 5.2

Acid grassland broad habitat
(wet & dry)

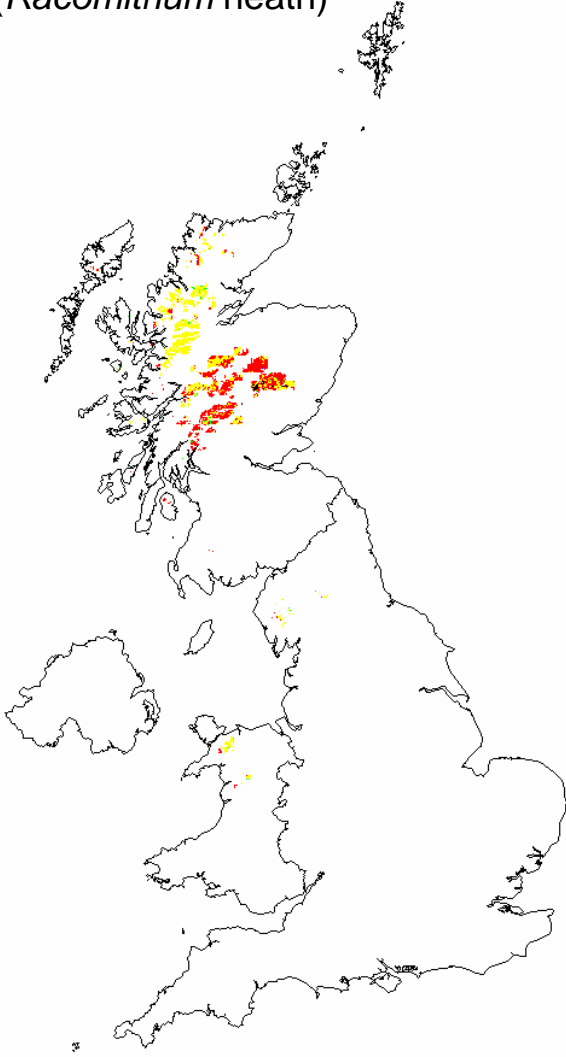
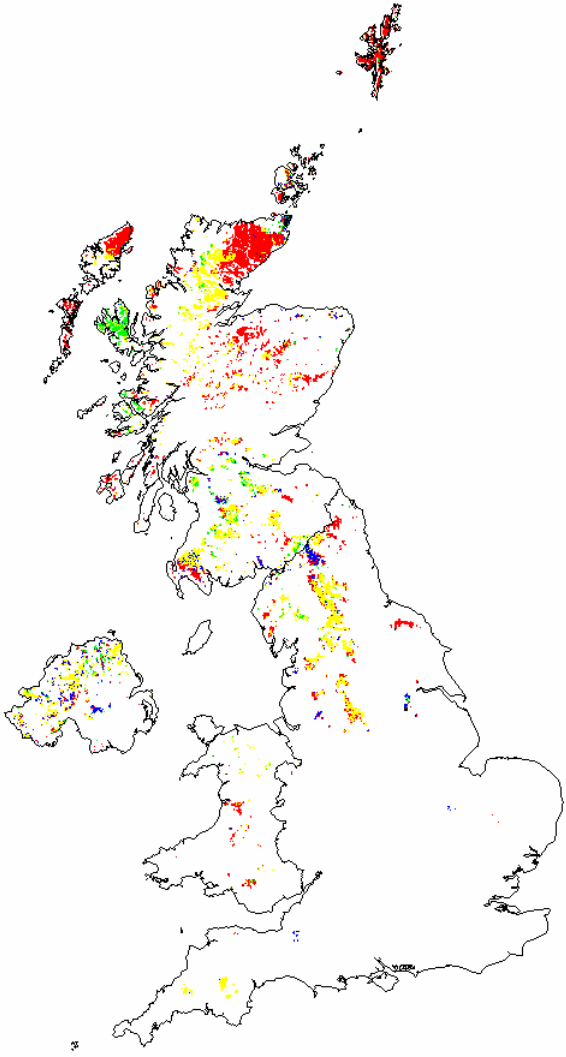
Calcareous grassland
broad habitat

Dwarf shrub heath broad habitat
(wet & dry)



Bog broad habitat

Montane broad habitat
(*Racomitrium* heath)

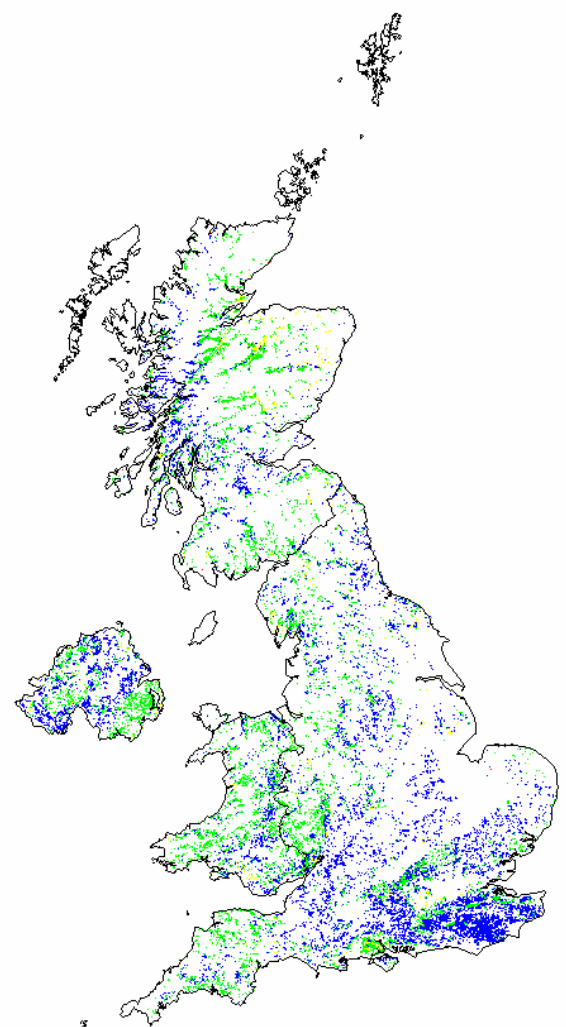
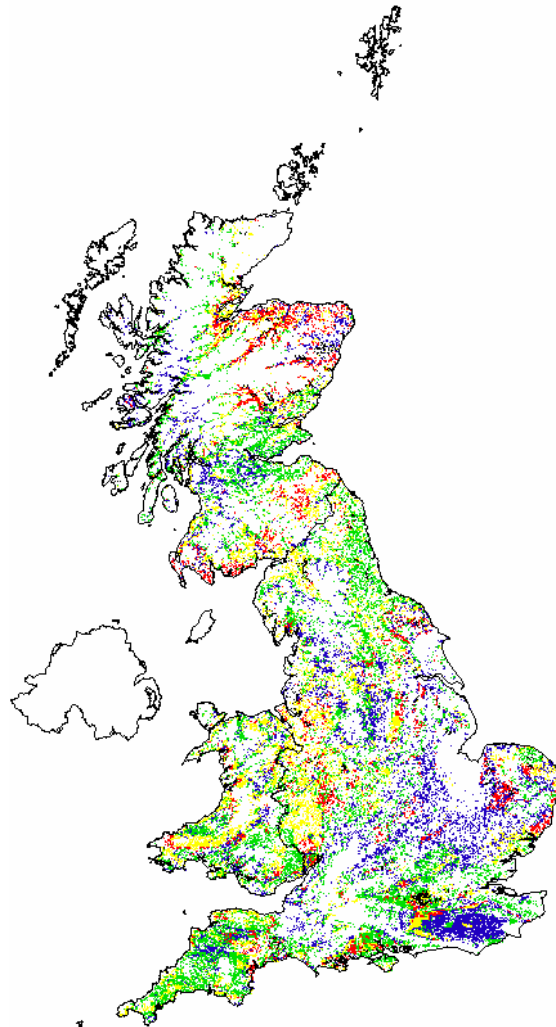
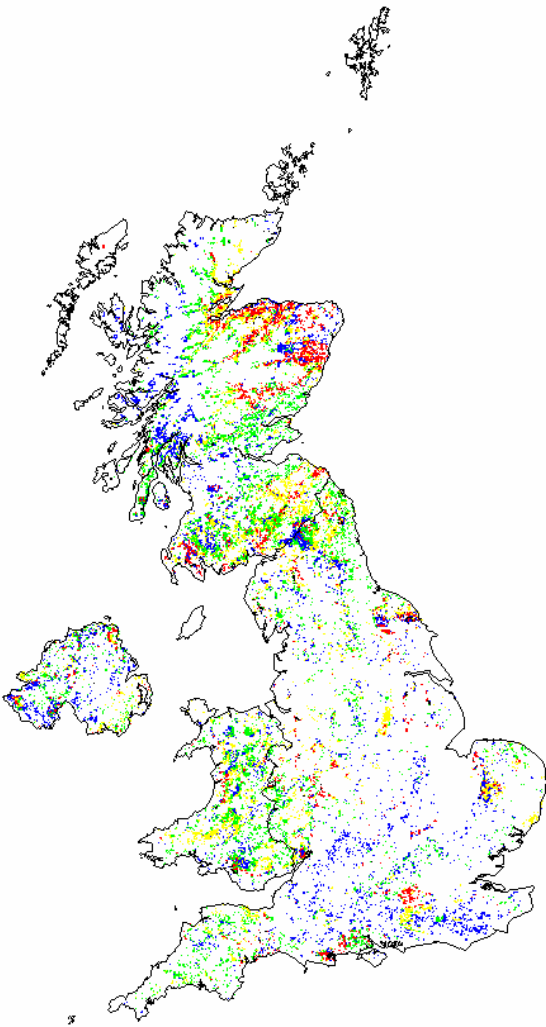


Maximum critical load of sulphur ($CL_{max}S$)

Coniferous woodland broad habitat:
managed areas only

Broadleaved, mixed & yew woodland broad habitat:
managed broadleaved woodland

unmanaged coniferous &
broadleaved woodland



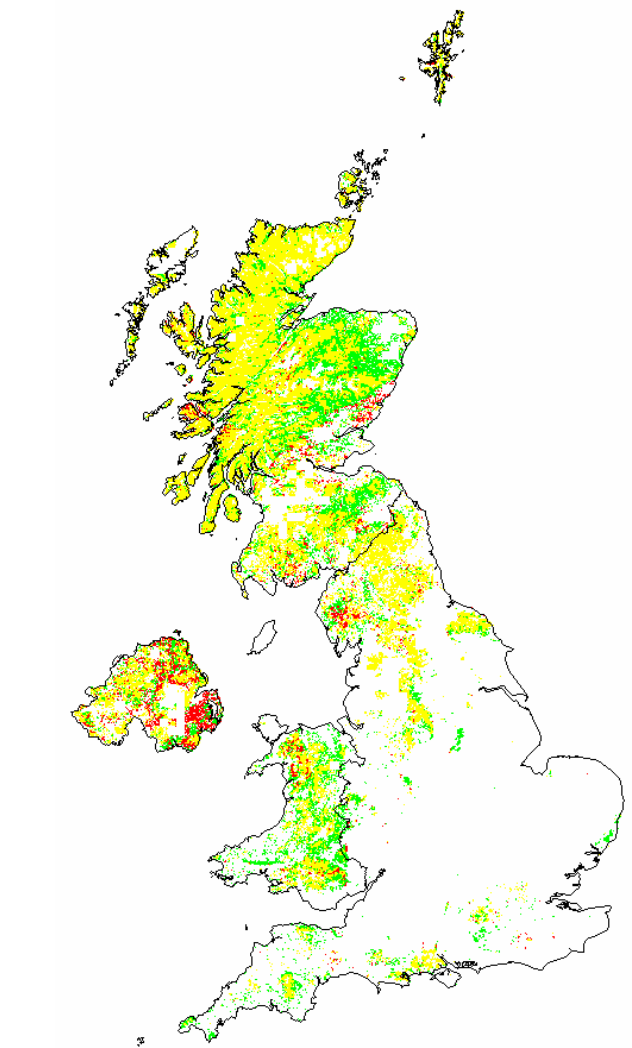
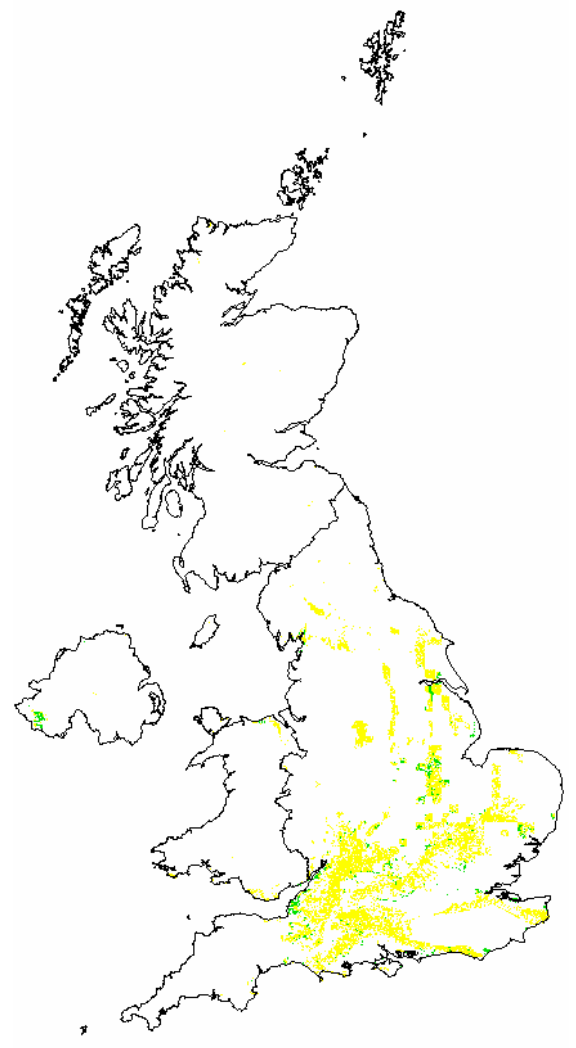
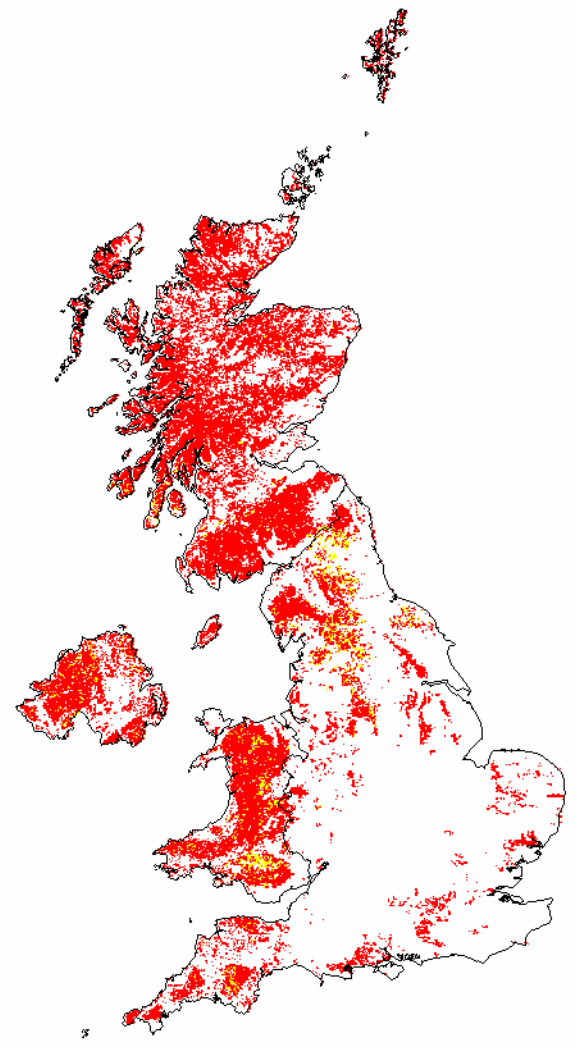
Minimum critical load of nitrogen ($CL_{\min}N$)

Figure 5.5

Acid grassland broad habitat
(wet & dry)

Calcareous grassland broad habitat
broad habitat

Dwarf shrub heath broad habitat
(wet & dry)

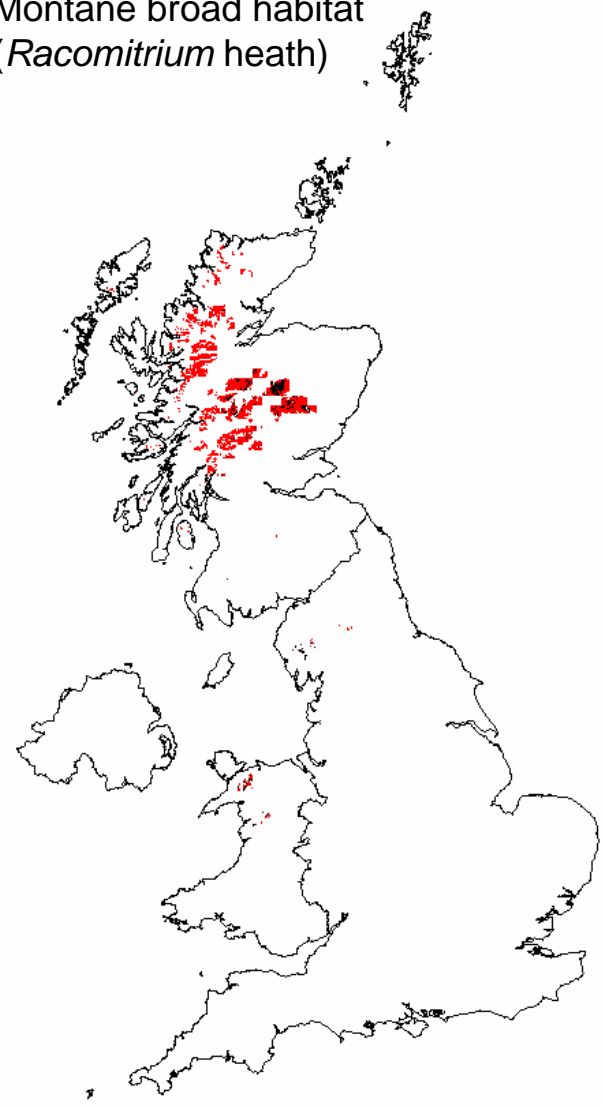
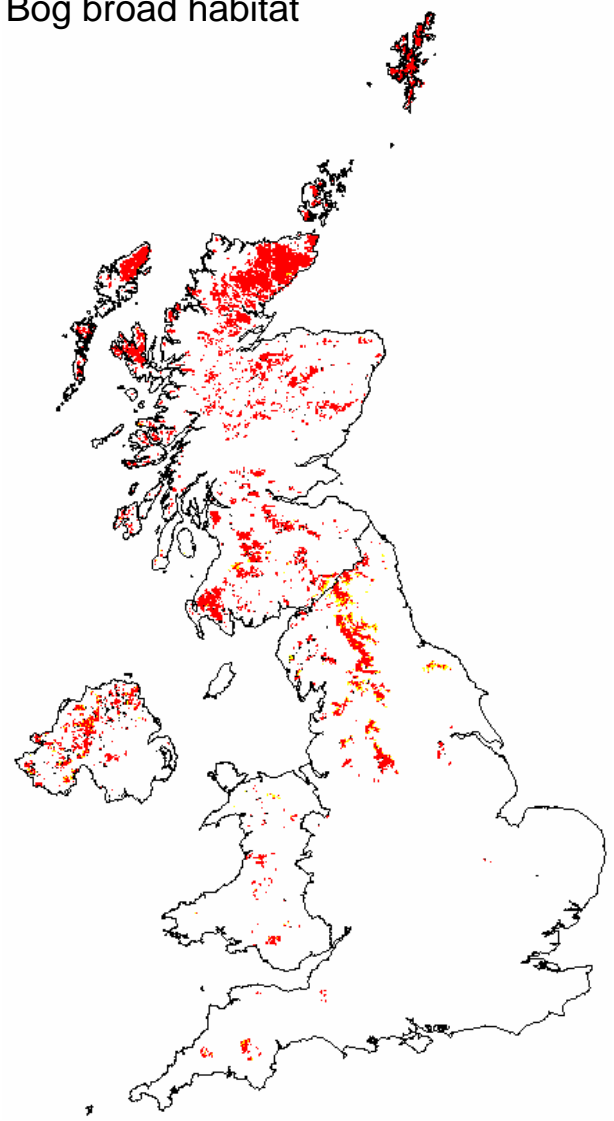


Minimum critical load of nitrogen ($CL_{min}N$)

Figure 5.6

Bog broad habitat

Montane broad habitat
(*Racomitrium* heath)



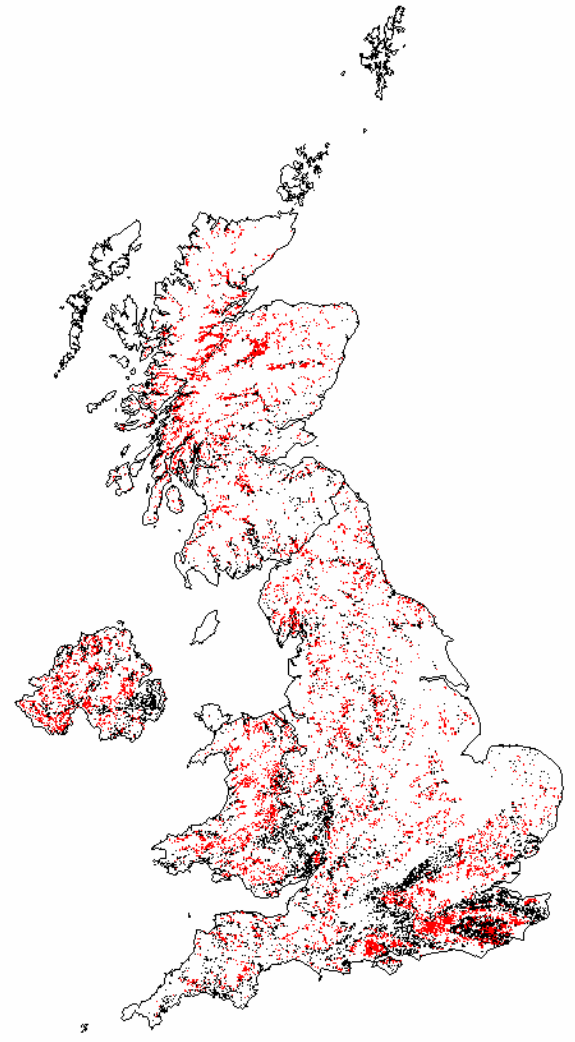
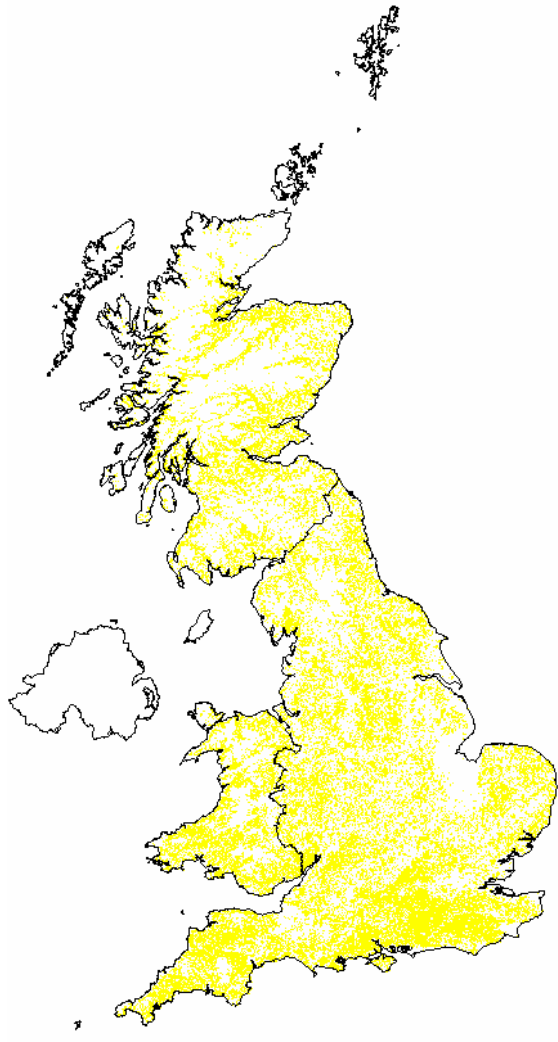
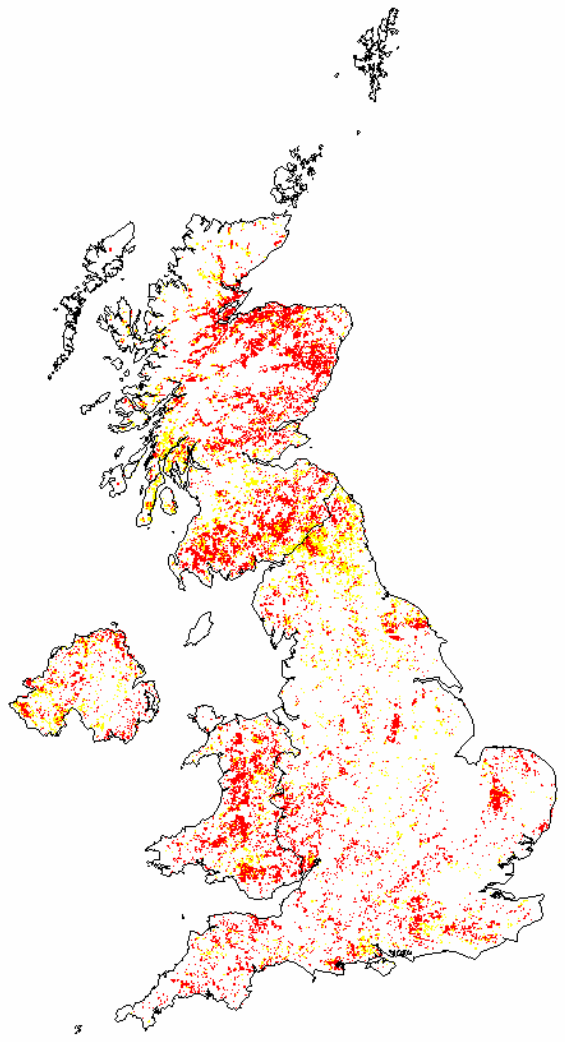
Minimum critical load of nitrogen ($CL_{min}N$)

Figure 5.7

Coniferous woodland broad habitat:
managed areas only

Broadleaved, mixed & yew woodland broad habitat:
managed broadleaved woodland

unmanaged coniferous &
broadleaved woodland

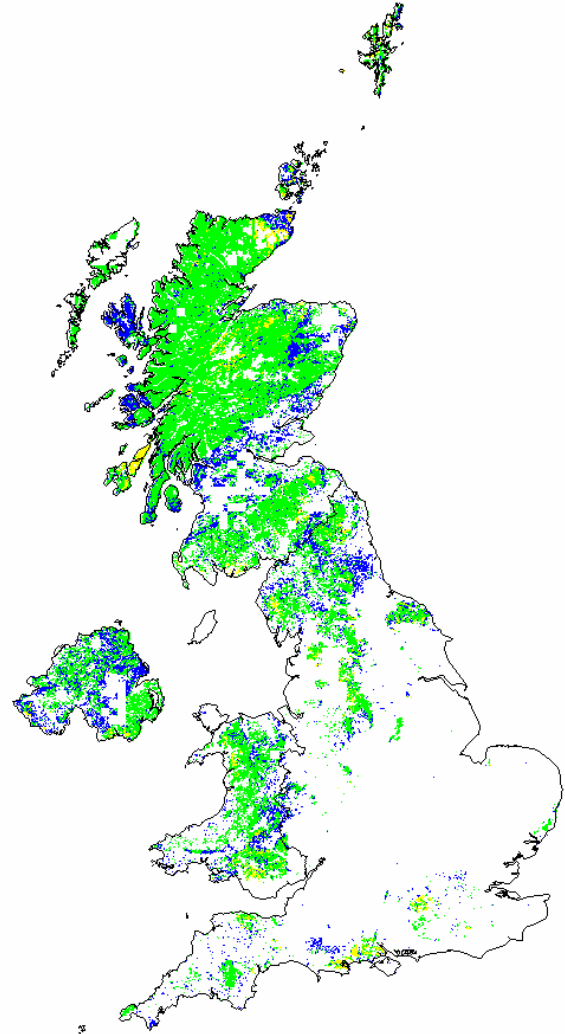
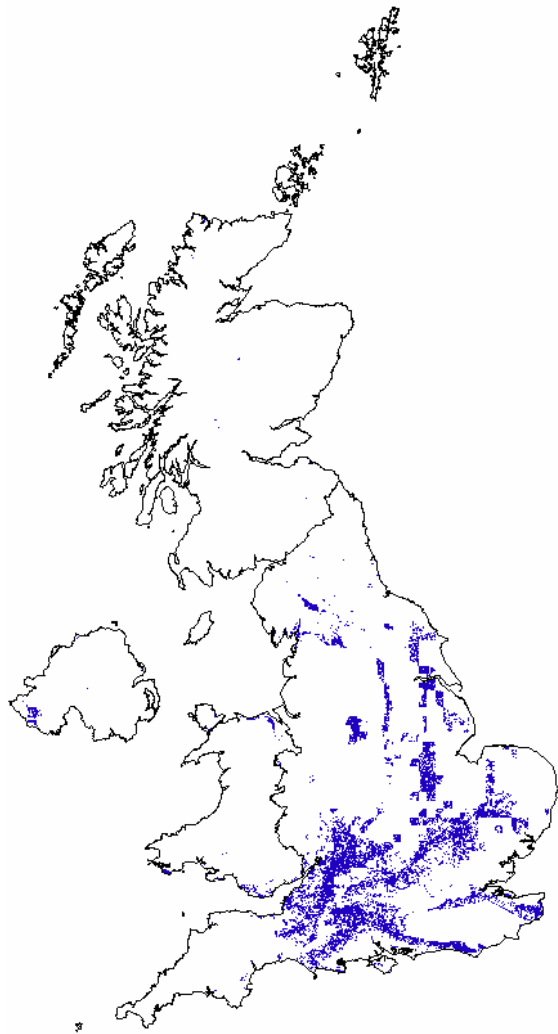
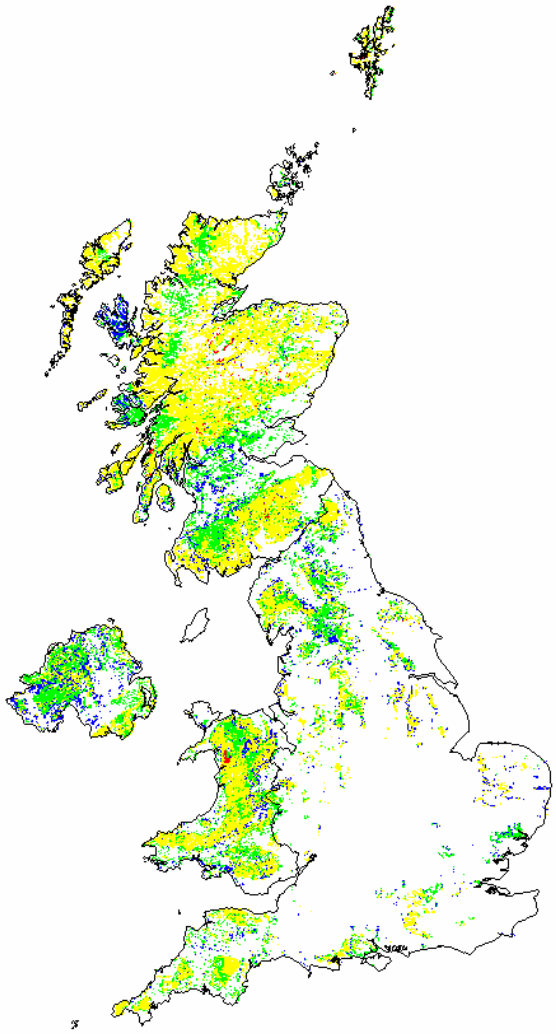


Maximum critical load of nitrogen ($CL_{max}N$)

Acid grassland broad habitat
(wet & dry)

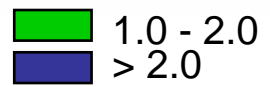
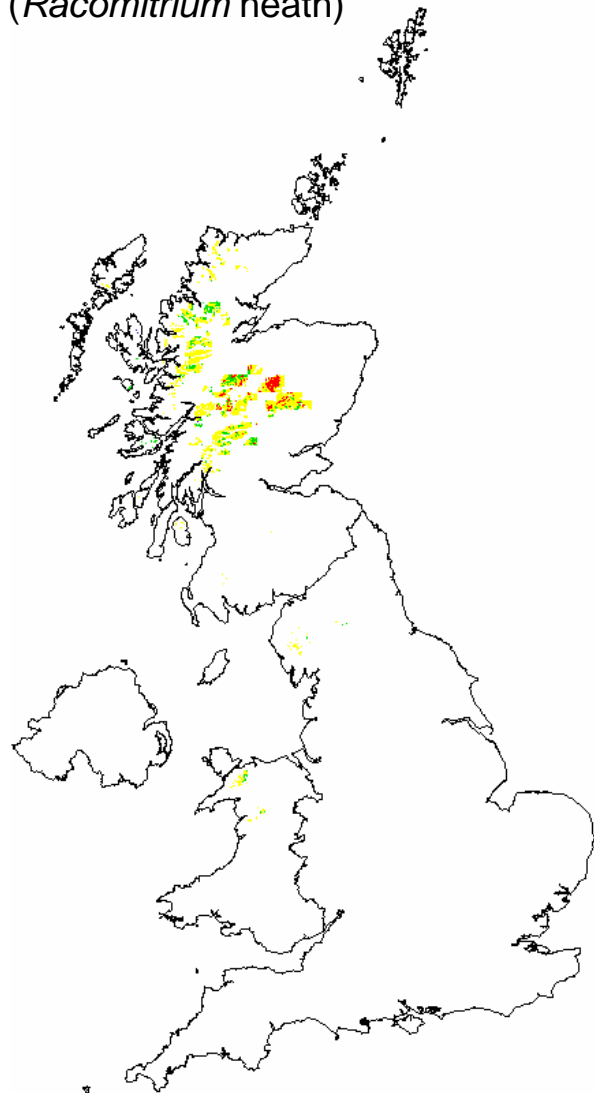
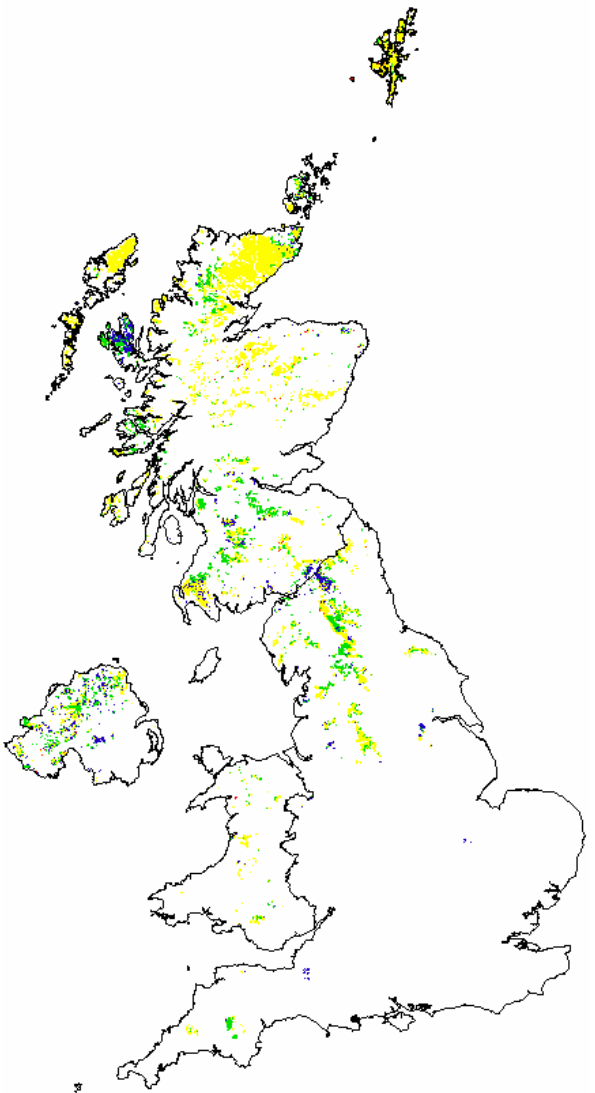
Calcareous grassland broad habitat
broad habitat

Dwarf shrub heath broad habitat
(wet & dry)



Bog broad habitat

Montane broad habitat
(*Racomitrium* heath)



Maximum critical load of nitrogen ($CL_{max}N$)

Coniferous woodland broad habitat:
managed areas only

Broadleaved, mixed & yew woodland broad habitat:
managed broadleaved woodland

unmanaged coniferous &
broadleaved woodland

